

Weeks This Month: 5  
Weeks Last Month: 5

## Monthly Footfall Counts

	Year to date % YoY		This month % YoY		This month % MoM	
	2025	2024	2025	2024	2025	2024
Bognor Regis Town Centre	-17.0%	0.6%	-17.0%	0.6%	-16.0%	-0.9%
South East	-0.7%	-7.0%	-0.8%	-6.9%	-17.3%	-18.3%
High Street Index - BDSU (BDSU - Speciality)	0.9%	-2.1%	0.8%	-1.7%	-14.6%	-11.0%
High Street Index(Coastal Town)	-4.0%	-4.4%	-4.0%	-4.4%	-20.4%	-17.7%
UK	-0.3%	-2.4%	-0.3%	-2.3%	-22.4%	-20.3%

Benchmark calculations (Year on Year and Month on Month) have been calculated using like for like data sets (only those counters available in both comparison periods) to ensure statistical accuracy

## Headlines

The total number of visitors for the year to date is 273,928 which is 17% down on the previous year.

The total number of visitors to Bognor Regis Town Centre in month commencing 30 December 2024 was 273,928.

The busiest day in month commencing 30 December 2024 was Saturday 1 February with 13,572 visitors.

The peak hour of the month was 11:00 on Saturday 1 February 2025 with footfall of 2,068.

## Footfall Counts by month



■ This Month      ■ Previous Year  
■ Previous Month      ■ 2 Years Ago

Figures shown below are calculated using monthly totals.

## Weather



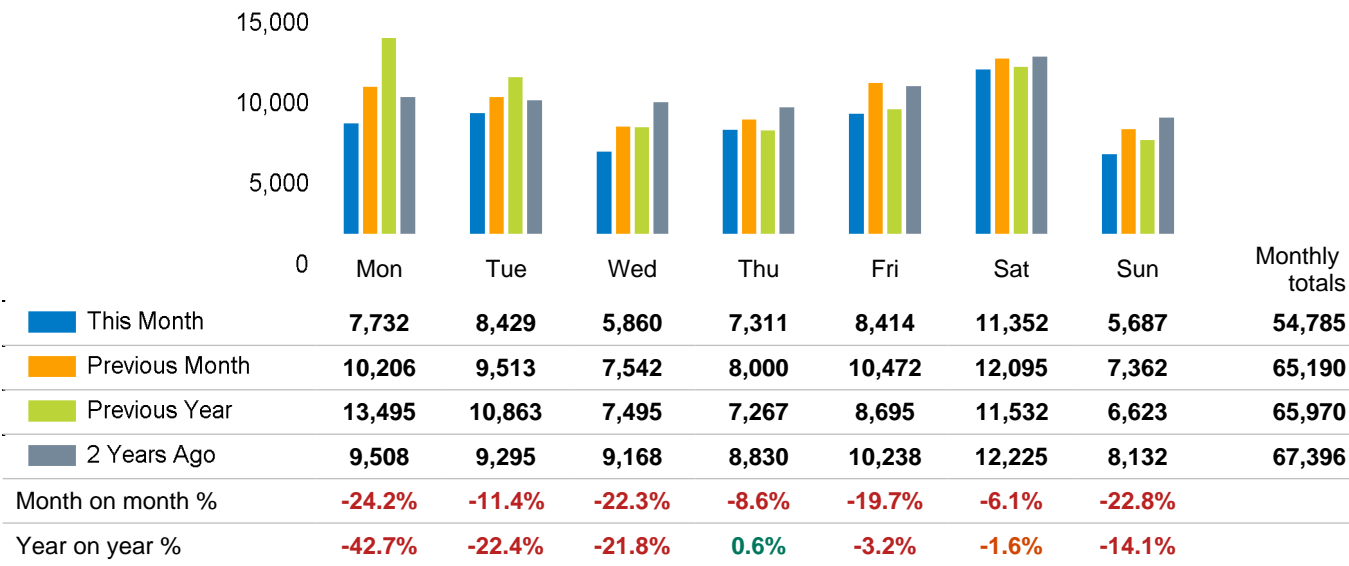
Number of days this month	9	23	3
Number of days same month last year	12	20	3
Number of days same month two years ago	13	20	2

## Average temperature

	Maximum temperature	Minimum temperature
2025	9°	2°
2024	9°	3°
2023	9°	4°

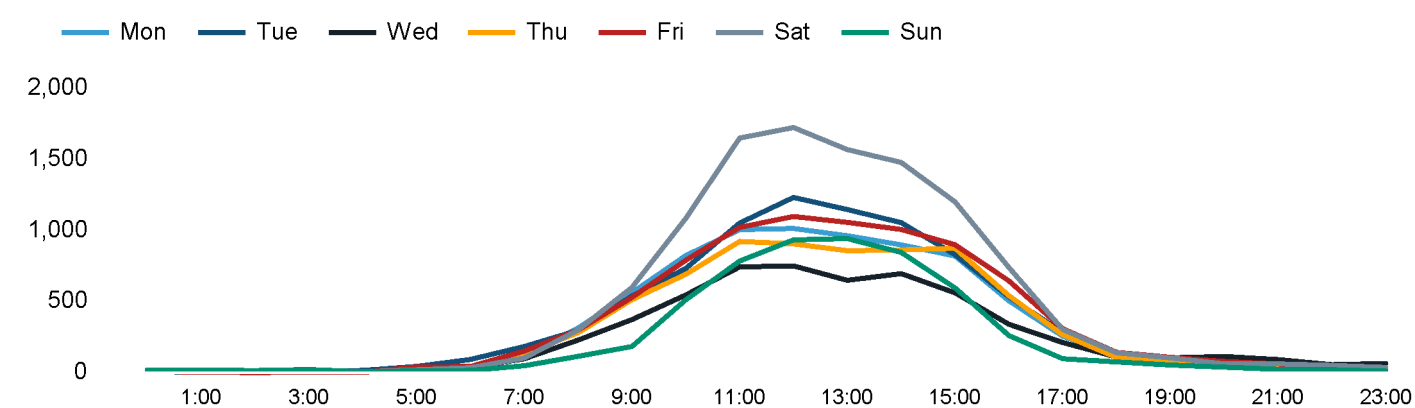
**Footfall Counts by day**

The figures shown below are calculated using weekly averages.



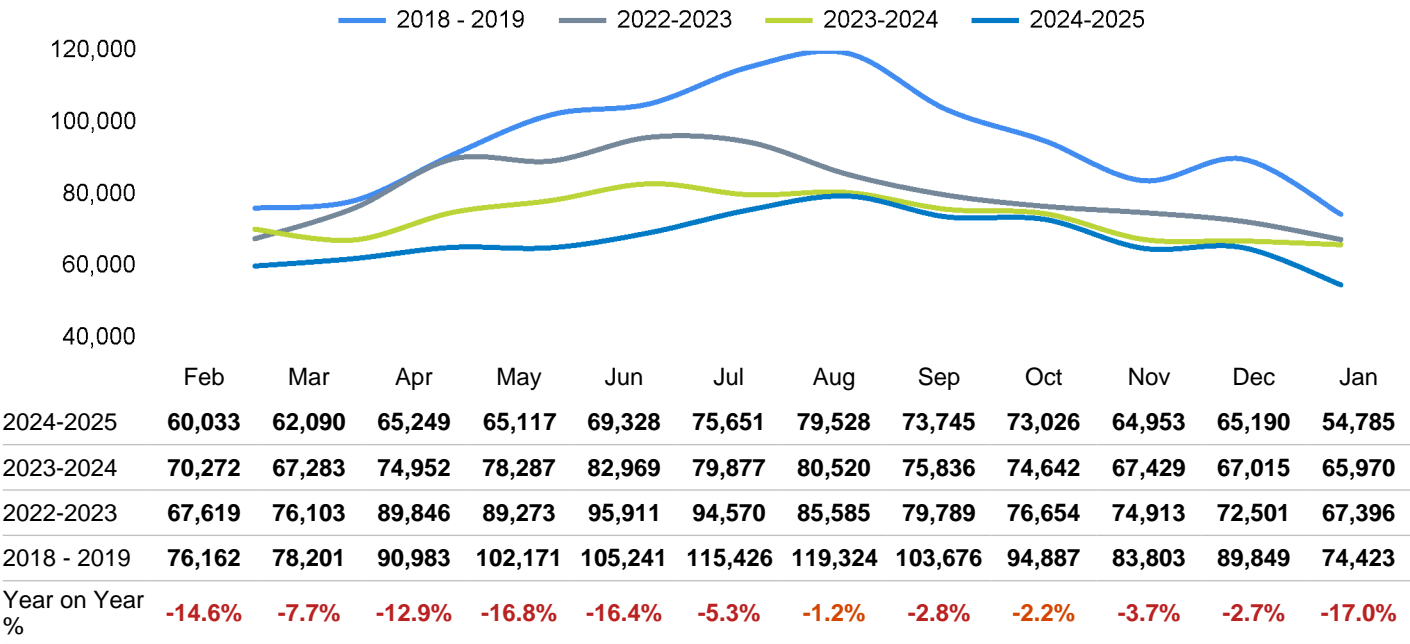
**Footfall Counts by hour**

The figures shown below are calculated using a weekly average



**Footfall Counts - rolling 12 months**

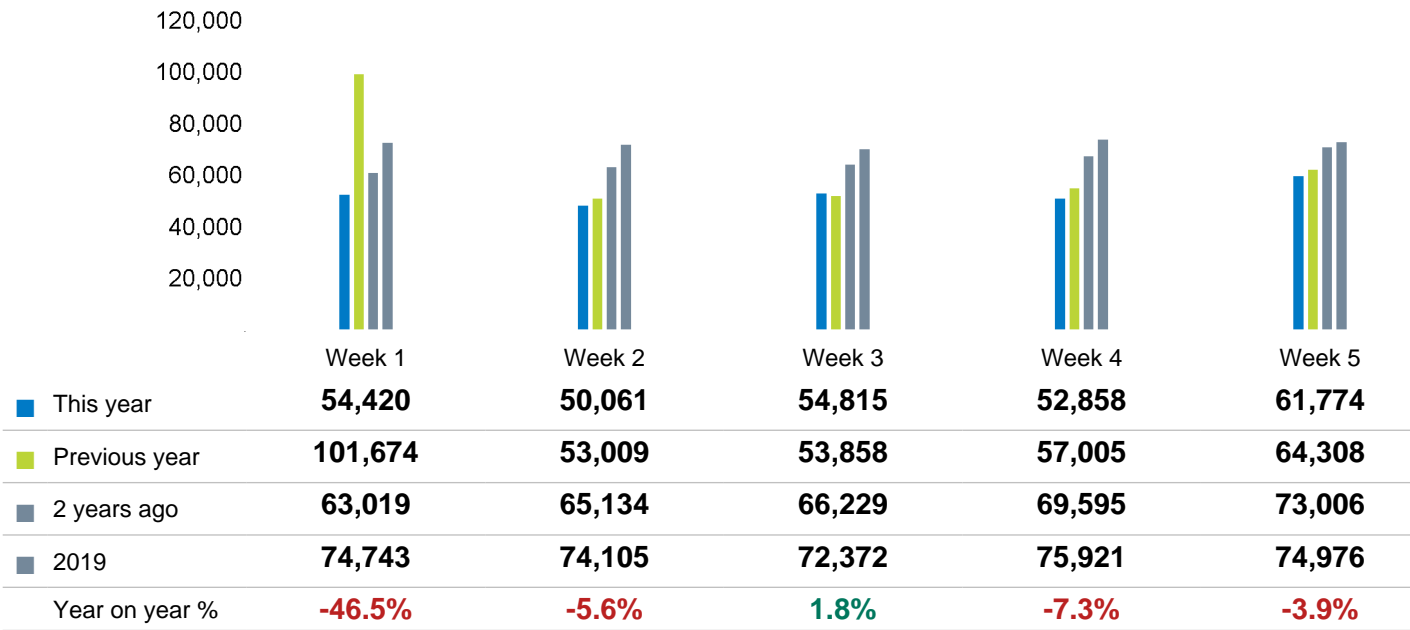
The figures shown below are calculated using weekly averages.



Year on year % is calculated by comparing the 2024-2025 period with the 2023-2024 period i.e the figure for January compares January 2025 to January 2024

**Footfall Counts by week of month**

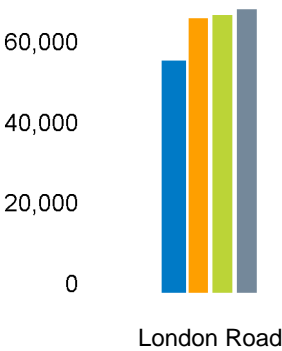
The figures shown below are calculated using weekly totals.



## Footfall Counts by location

The figures shown below are calculated using weekly averages.

This month Previous month Previous year 2 Years ago



This Month	54,785
Previous Month	65,190
Previous Year	65,970
2 Years Ago	67,396
Year on Year %	-17.0 %

Reporting dates

---

This month - 30 December 2024 - 02 February 2025

Year to Date % Change is the annual % change in footfall from January of this year compared to the same period last year. January,2025 to January , 2025 Vs January, 2024 to January , 2024

Year on Year % Change is the % change in footfall for this month compared to the same week in the previous year.January,2025 Vs January, 2024

Month on Month % Change is the % change in footfall for this Month from the previous Month.1 2025 Vs December 2024